

It is a **centralized identity management solution** for organizations that automatically identifies and synchronizes employee identities across all systems where access is requested.



Advanced Features:



Role-Based Authorization Management



Self-Service Password Management



Workflow Management



Pre-built Connectors



Advanced Form Editor



GDPR KVKK Dashboard



Analytical Reports



SIEM Compliant Logs and Analyses

Gains in organisations with the *ideal*;

Information Technology

Centralization in user account creation, closure, and management processes

Ease in password reset & unlock processes

Integration in identity management processes across cloud, on-premise, or hybrid environments

Accelerate compliance with KVKK by ensuring the security of identity information

Tools for admin users to design **reports and dashboards**

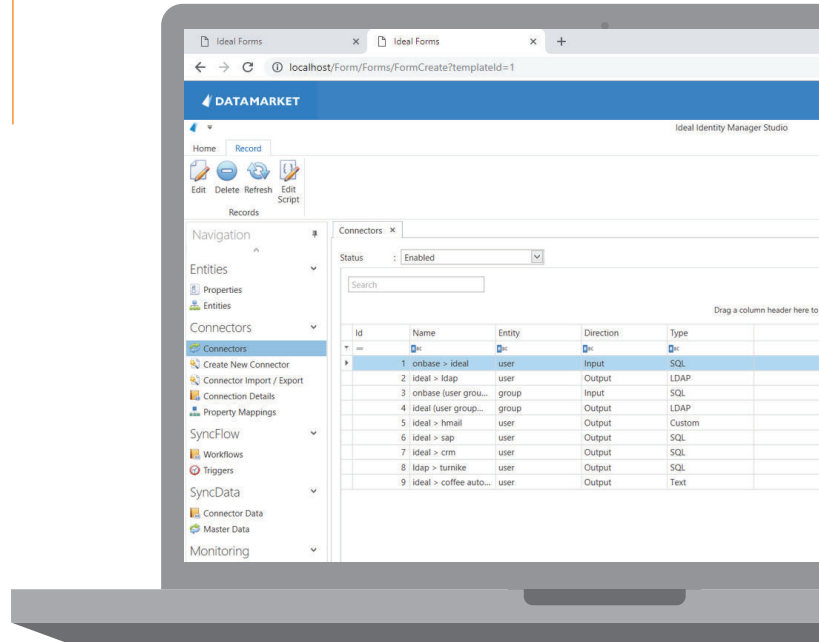
Automation in user group management

Human Resources

Digitalization in role-based authorization and internal control processes

Acceleration in the management of organizational changes

Continuous monitoring of the employee **lifecycle**



ideal is a domestic and national identity management solution developed by the R&D team of Data Market.



idealidm.com/en



www.datamarket.com.tr

Since 1992, we are at your side as your solution provider, system integrator and strategic business partner with more than 30 years of experience.



[/datamarket1992](https://www.instagram.com/datamarket1992)

Türkiye
Gücünü ve Potansiyelini Keşfet